

MRC

**Midwest
Rail Conference**



Aug. 15-17, 2017 • Kalamazoo, MI

In conjunction with



Summerail

*TRB Freight Rail Committee
Blue Ribbon Award 2016*

**Thank You
To Our Amazing
Sponsors**

Diamond Level Sponsors

QUANDEL

Platinum Level Sponsors



Gold Level Sponsors

Summerail

TRB Freight Rail Committee
Blue Ribbon Award 2016



Railway Research and Education
Eli Broad College of Business
MICHIGAN STATE UNIVERSITY



LEWIS C. HOWARD, INC.

Industrial Warehousing Distribution Services
Transportation and Boxcar Services



AECOM



SIEMENS

Ingenuity for life



DeCook

Governmental Policy & Strategies

2895 Colony Drive • East Lansing • MI • 48823

p| 517.712.1461 • e| ron.decook@decook-gps.com



Silver Level Sponsors



OPENING RECEPTION



BREAKFAST



DeCook

Governmental Policy & Strategies

2895 Colony Drive • East Lansing • MI • 48823

p| 517.712.1461 • e| ron.decook@decook-gps.com

BREAKS



LEWIS C. HOWARD, INC.

Industrial Warehousing Distribution Services
Transportation and Boxcar Services

FIELD TRIP TRANSPORTATION



NOTEPADS



Railway Research and Education
Eli Broad College of Business
MICHIGAN STATE UNIVERSITY

LUNCH



LITTLE RIVER

STEAM TRAIN

Summerail

TRB Freight Rail Committee
Blue Ribbon Award 2015

CONFERENCE BAGS



FLASH DRIVES

& USB

CHARGERS

SPONSOR



LANYARDS



STUDENT SCHOLARSHIPS

* GW&PFS

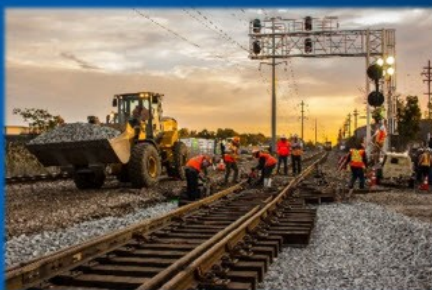
* MARP

* MR. JOHN GUIDINGER

* WSP

* PATHFINDER ENGINEERING, INC.

* GENESEE & WYOMING RAILROAD



Proudly Providing Program/Project Management, Planning, and Engineering Services throughout the Midwest:

Chicago-Detroit/Pontiac Accelerated Rail Program for Michigan DOT

Chicago-Quad Cities Rail Project for Illinois DOT

Chicago-Milwaukee Environmental Assessment and Service Development Plan for Wisconsin DOT

Twin Cities-Duluth Northern Lights Express Rail Project for Minnesota DOT

For additional information please visit us at
www.quandelconsultants.com

Proud Sponsor of the 2017 Midwest Rail Conference, Kalamazoo, MI

ENGINEERING SOLUTIONS FOR TRANSPORTATION SYSTEMS

RAIL • HIGHWAYS • BRIDGES



Lake State Railway Company
“EXCELLENCE IN TRANSPORTATION”
WWW.LSRC.COM
989-393-9800



**Customer First
Safety Always!**

WATCO COMPANIES



Transportation



Terminals & Ports



Watco Supply Chain



Mechanical

www.watcocompanies.com





Summerail

TRB Freight Rail Committee
Blue Ribbon Award 2016

AECOM

Engineering News-Record* ranks AECOM:

#1 Mass Transit and Rail

#1 Transportation

* According to 2017 rankings



LEWIS C. HOWARD, INC.

Industrial Warehousing Distribution Services
Transportation and Boxcar Services

WSP



DeCook

Governmental Policy & Strategies

2895 Colony Drive • East Lansing • MI • 48823

p| 517.712.1461 • e| ron.decook@decook-gps.com

HDR

SIEMENS

Ingenuity for life

MICHIGAN STATE UNIVERSITY
**RAILWAY MANAGEMENT
CERTIFICATE PROGRAM**



“Get on the Right Track”

Fall 2017 Registration Now Open

Sue Lonier • 517.353.5667
railway.broad.msu.edu/info



Center for Railway
Research and Education
Broad College of Business
MICHIGAN STATE UNIVERSITY

**MECHANICAL & ELECTRICAL ENGINEERING
SERVICES FOR THE RAILROAD INDUSTRY**

- MECHANICAL DESIGN
- ELECTRICAL DESIGN
- STRUCTURAL ANALYSIS
- OPTIMIZATION
- SIMULATION
- TESTING
- INSTRUMENTATION
- PRODUCT DEVELOPMENT
- PROJECT MANAGEMENT



CORPORATE OFFICE
47500 US Hwy 41
Houghton, MI 49931
tel: 906.482.1235
gsengineering.com



AS 9100



<p>AECOM 400 Renaissance Center, Suite 2600 Detroit, MI 48243 aecom.com</p>	<p>“We plan, design, and engineer rail operations, and provide consulting services for passenger and freight rail lines including intermodal transfer and maintenance facilities. We navigate smooth and seamless connections between freight rail, ports and terminal projects. Our methods apply new ideas and explore opportunities to rehabilitate and develop new systems.”</p>
<p>Amtrak www.amtrak.com</p>	<p>“Amtrak – America’s Railroad® – is dedicated to safe and reliable mobility as the nation’s intercity passenger rail service provider and its high-speed rail operator. With our state and commuter partners, we move people, the economy and the nation forward, carrying more than 30 million Amtrak passengers for each of the past six years.”</p>
<p>CN 17641 S. Ashland Drive Homewood, IL 60430 https://www.cn.ca</p>	<p>“CN is a true backbone of the economy whose team of approximately 23,000 railroaders transports more than C\$250 billion worth of goods annually for a wide range of business sectors, ranging from resource products to manufactured products to consumer goods, across a rail network of approximately 20,000 route-miles spanning Canada and mid-America. CN – Canadian National Railway Company, along with its operating railway subsidiaries – serves the cities and ports of Vancouver, Prince Rupert, B.C., Montreal, Halifax, New Orleans, and Mobile, Ala., and the metropolitan areas of Toronto, Edmonton, Winnipeg, Calgary, Chicago, Memphis, Detroit, Duluth, Minn./Superior, Wis., and Jackson, Miss., with connections to all points in North America. For more information about CN, visit the company’s website at www.cn.ca.”</p>
<p>CSX 1700 W 167th St. Calumet City, IL 60509 www.csx.com</p>	<p>“CSX Corporation, together with its subsidiaries based in Jacksonville, Fla., is one of the nation’s leading transportation suppliers. The company’s rail and intermodal businesses provide rail-based transportation services including traditional rail service and the transport of intermodal containers and trailers. Overall, the CSX Transportation network encompasses about 21,000 route miles of track in 23 states, the District of Columbia and the Canadian provinces of Ontario and Quebec. Our transportation network serves some of the largest population centers in the nation. Nearly two-thirds of Americans live within CSX’s service territory.”</p>

<p>De Cook Governmental Policy & Strategies 2895 Colony Drive East Lansing, MI 48823</p>	<p>“DeCook Governmental Policy & Strategies is a transportation multi-modal focused business. DeCook-GPS provides consulting, Federal and State policy analysis, strategic planning, government relations, and public relations in Michigan. DeCook-GPS works with Michigan state government leaders, local governments, local/regional transportation organizations, to improve/promote transportation options and transportation related business development.”</p>
<p>Genesee & Wyoming 13901 Sutton Park Dr. S., Ste. 150 Jacksonville, FL 32224 www.gwrr.com</p>	<p>“Genesee & Wyoming Inc. (G&W) owns short line and regional freight railroads in the United States, Canada, Australia, and Europe. Its 7,300 employees serve more than 3,000 customers and its operations include 121 railroads with more than 15,000 combined miles of owned and leased track.”</p>
<p>GS Engineering, Inc. 47500 US HWY 41 Houghton, MI 49931 gsengineering.com</p>	<p>“GS Engineering, Inc. is an agile small business based in Houghton, MI specializing in engineering and product development services. GS Engineering’s diverse and skilled staff delivers solutions to clients through the full product lifecycle including program management, mechanical and electrical design, analysis and simulation, and instrumented test activities.”</p>
<p>HDR 4435 Main St. Suite 1000 Kansas City, MO 69111 hdrinc.com</p>	<p>“We specialize in working with our clients to provide valuable technical expertise, strategic counsel and a full complement of integrated core engineering design. We are consistently building our capabilities and freight rail service offerings. We create an unshakable foundation for progress because our multi-disciplinary teams also include scientists, economists, builders, analysts and people with first-hand knowledge of working for a railroad company. Our employees, working in 225 locations around the world, push open the doors to what’s possible each and every day.”</p>
<p>Indiana University Press 1320 East 10th Street, Herman Wells 350 Bloomington, IN 47405 iupress.indiana.edu</p>	<p>“Indiana University Press’ mandate is to serve the world of scholarship and culture as a professional, not-for-profit publisher. Founded in 1950, we are recognized internationally as a leading academic publisher specializing in the humanities and social sciences. We produce approximately 140 new books annually, in addition to 27 journals, and maintain a backlist of some 2,000 titles.”</p>
<p>Lake State Railway 750 N. Washington Ave Saginaw, MI 48607 www.lsrc.com</p>	<p>“Lake State Railway is a railroad operating in the Saginaw Valley and northeastern quadrant of the Lower Peninsula of Michigan. The railroad moves large quantities of aggregate and limestone, as well as coal, grain, and chemical products.”</p>

<p>Lewis C. Howard, Inc. 760 E. Vine St. Kalamazoo, MI 49001 www.lewischoward.com</p>	<p>"Lewis C. Howard a family owned and operated business since 1957. Offering industrial warehouse, transportation and railcar services. With over 2 million sq. ft., 60 power units and 750+ trailers give us a call today to help service your account."</p>
<p>Marquette Rail and Huron & Eastern RR 239 N Jebavy Dr Ludington, MI 49431 gwrr.com</p>	<p>"Connections with both major Eastern trunk lines make the MQT a preferred source for box car, hopper and tank storage accessible to the upper Midwest. All car types are routinely received and delivered on short notice, and inspection, running repairs and testing services can be provided upon request. Huron & Eastern RR has 320 miles of track and interchanges include: Canadian National (Durand, Mich.); Great Lakes Central Railroad (Durand, Mich.); Lake State Railway (Saginaw, Mich. And Bay City, Mich.)"</p>
<p>Michigan Association of Rail Passengers - MARP PO Box 1368 Okemos, MI 48805-1368 www.marp.org</p>	<p>"MARP is the Michigan Association of Railroad Passengers, Inc., a 501 ©(3) non-profit corporation established in 1973 to improve passenger train service, travel conditions for passengers, and to work for the preservation of historic rail stations.MARP works with groups such as Metro Detroit-based Transportation Riders United and the National Association of Railroad Passengers to accomplish common goals. Anyone interested in passenger rail issues should also investigate these two organizations."</p>
<p>MSU - Railway Research & Education 3535 Forest Rd. C-34 Lansing, MI 48910 www.raileducation.com</p>	<p>"Michigan State University Railway Research and Education provides the Railway Management Certificate Program, continuing education seminars, and customized programs. Additionally, research projects, expertise in energy, motive-power, and management for freight, passenger and transit rail."</p>
<p>National Railroad Safety Services 7395 Kingsgate Way West Chester, OH 45069 www.nrssinc.net</p>	<p>"National Railroad Safety Services provides Railroad Flaggers, Track Inspectors, Signal Maintainers, Construction Inspectors, Project Management, Safety Audits, and various training programs such as, Roadway Worker Protection, Bridge Worker Safety, Contractor Orientation Training, Track Safety Standards and Continuous Welded Rail. Nationwide service! Locations: Cincinnati, OH; Chicago, IL & Arlington, TX."</p>

<p>Norfolk Southern Corporation 411 East Franklin Street, Suite 501 Richmond, VA 23219 www.nscorp.com</p>	<p>"Norfolk Southern Corporation is a premier U.S. transportation company. Its Norfolk Southern Railway subsidiary operates approximately 19,500 route miles in 22 states and provides efficient connections to other rail carriers. NS operates the most extensive intermodal network in the East and is a major transporter of coal, automotive, and industrial products."</p>
<p>Pathfinder Engineering, Inc. 2335 byron Center Ave, SW Wyoming, MI 49519 pathfinderengineering.com</p>	<p>"Pathfinder Engineering, Incorporated is a Civil Engineering firm that provides professional engineering and surveying services. Services provided are industrial, residential and commercial development. Engineering services include municipal engineering, infrastructure projects, plan reviews, Special Assessment District Assistance and fee structures. Specialty services are available for private railroad design and airport design infrastructure design."</p>
<p>Prime Focus, LLC 981 Fox River Drive De Pere, WI 54115 www.primefocusllc.com</p>	<p>"Prime Focus LLC, was established in 2001 is a freight transportation planning and logistic consulting firm, with expertise in grant writing and economic development. Ms. Ogard worked for BNSF, Conrail and Schneider National and has managed rail shipments, dedicated, irregular route truckloads, and refrigerated, domestic and international intermodal shipments."</p>
<p>Quandel Consultants, LLC 161 N. Clark St, Suite 2060 Chicago, IL 60601 www.quandelconsultants.com</p>	<p>"Quandel Consultants provides engineering, planning, operations analysis, and construction management services to the railroad and rail transit industries. Quandel Consultants has offices in Chicago, IL; St. Charles, IL; Kalamazoo, MI; St. Paul, MN; and Cleveland, OH. Quandel offers rail engineering services from preliminary engineering, final design, and construction inspection for bridges and structures, track, roadbed, drainage, grade crossings, and general civil works."</p>
<p>Siemens Industry, Inc. 7464 French Rd. Sacramento, CA 95828 usa.siemens.com/mobility</p>	<p>"Siemens Mobility Division provides efficient and integrated transportation of people and goods by rail and road – including all products, solutions and services regarding mobility. Cities also rely on Siemens to provide traction-power substations and electricity transmission, as well as signaling and control technology for freight & passenger rail and transit systems."</p>

Strato Inc. 100 New England Avenue Piscataway, NJ 08854 www.stratoinc.com	<p>“Strato, Inc. is a leading manufacturer, engineering quality products while providing exceptional customer service to the rail industry. All products meet AAR specifications.</p> <p>Strato offers on-site engineering services for special projects and challenges. An R&D lab and test facilities located within the plant are equipped to simulate real world conditions.”</p>
Summerail Planning Committee	<p>“Summerail annual meeting hosted by Freight Rail Committee of TRB. Now in its 11th year, Summerail brings together transportation practitioner, academics and students for timely presentations and rail tour activities at various locations across the USA.”</p>
Talgo, Inc. 240 South Holgate Street, Building M Seattle, WA 98134 www.talgoamerica.com	<p>“Talgo is one of the world’s leading rolling stock manufacturers in business for over 75 years of experience that includes:</p> <ul style="list-style-type: none"> • Design, integration, manufacture, maintenance of HSR and intercity passenger rail equipment. • Pioneer in preventive maintenance of rail equipment that now expands to major overhauls of systems and subsystems on rolling stock including light rail vehicles and heavy rail vehicles.”
Transpo Industries, Inc. 20 Jones Street New Rochelle, NY 10801 www.transpo.com	<p>“Since 1968, Transpo has been dedicated to supplying the finest products for the transportation industry. Transpo manufactures products and materials designed for improved road safety and preservation, that are widely recognized for their quality, performance and reliability. The company’s mission is to help professionals plan and engineer roadway safety products.”</p>
Watco Companies 315 W. 3 rd Pittsburg, KS 66762 www.watcocompanies.com	<p>“Watco Companies is a Customer First transportation solutions provider operating locations throughout the world. Watco’s transportation, mechanical, terminal and port, and supply chain divisions offer a variety of services to meet our Customers transportation needs. More information about Watco and its subsidiaries can be found at www.watcocompanies.com.”</p>
WSP USA 30 North Lasalle, Suite 4200 Chicago, IL 60602 wsp.com	<p>“At WSP USA, formerly WSP Parsons Brinckerhoff, our expertise lies at the intersection of the infrastructure and the skylines we have helped to shape from coast to coast.”</p>